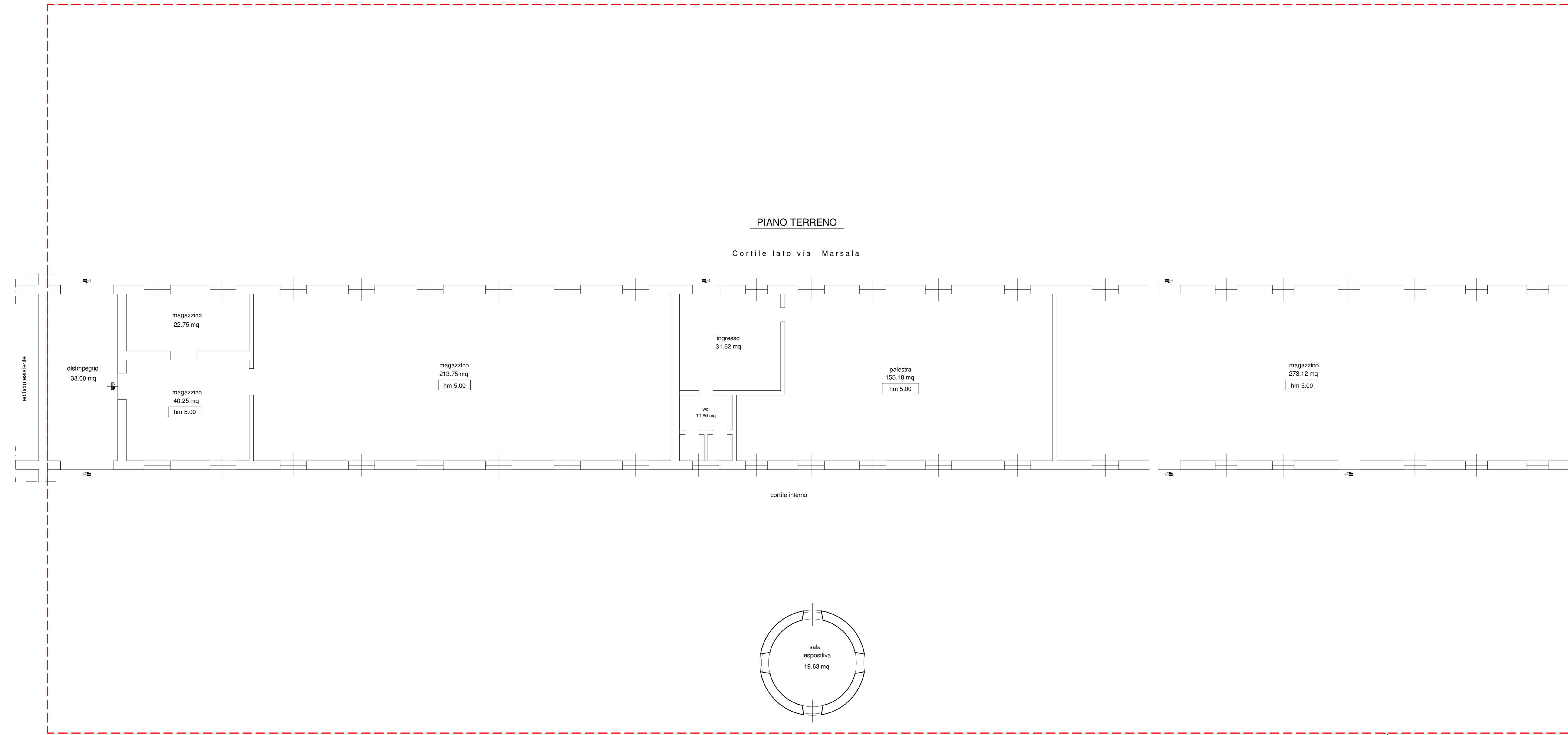


via Marsala



PIANO TERRENO

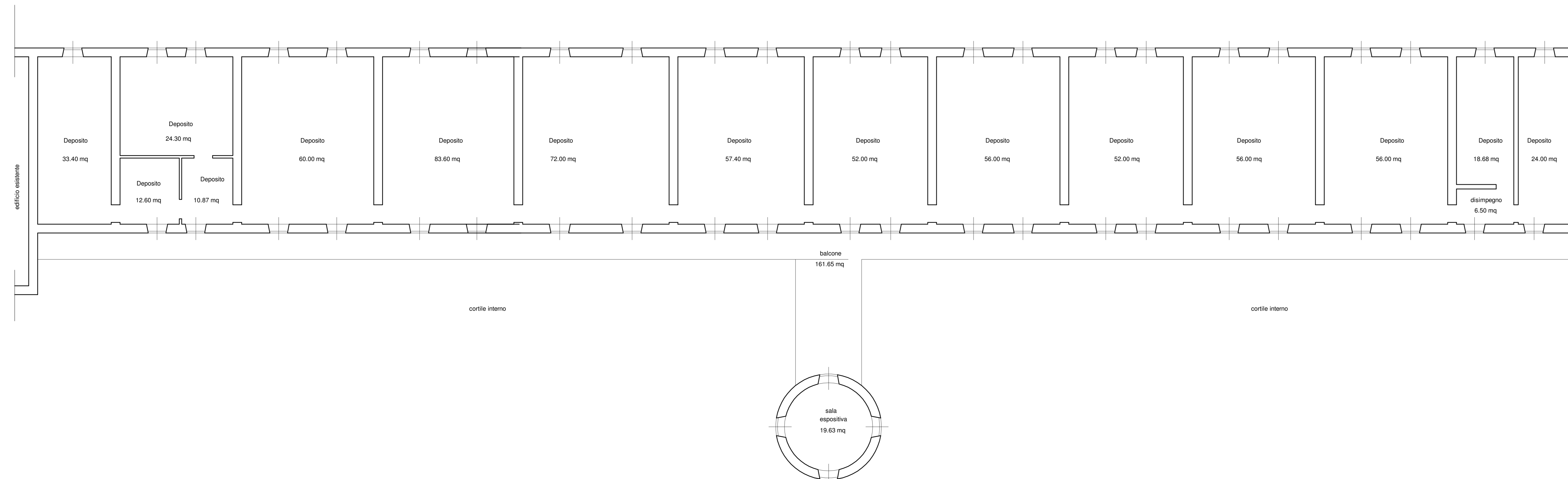
Cortile lato via Marsala

cortile interno

sala espositiva 19.63 mq

PIANTA PIANO PRIMO

Cortile lato Via Marsala



sala espositiva 19.63 mq

Area fondiaria di pertinenza

Comune di
VOGHERA
(Provincia di Pavia)

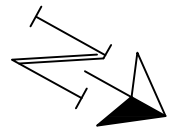


DESCRIZIONE

INVENTARIO PATRIMONIO COMUNALE
Ex Caserma "Zanardi Bonfiglio"
Magazzini lato via Marsala

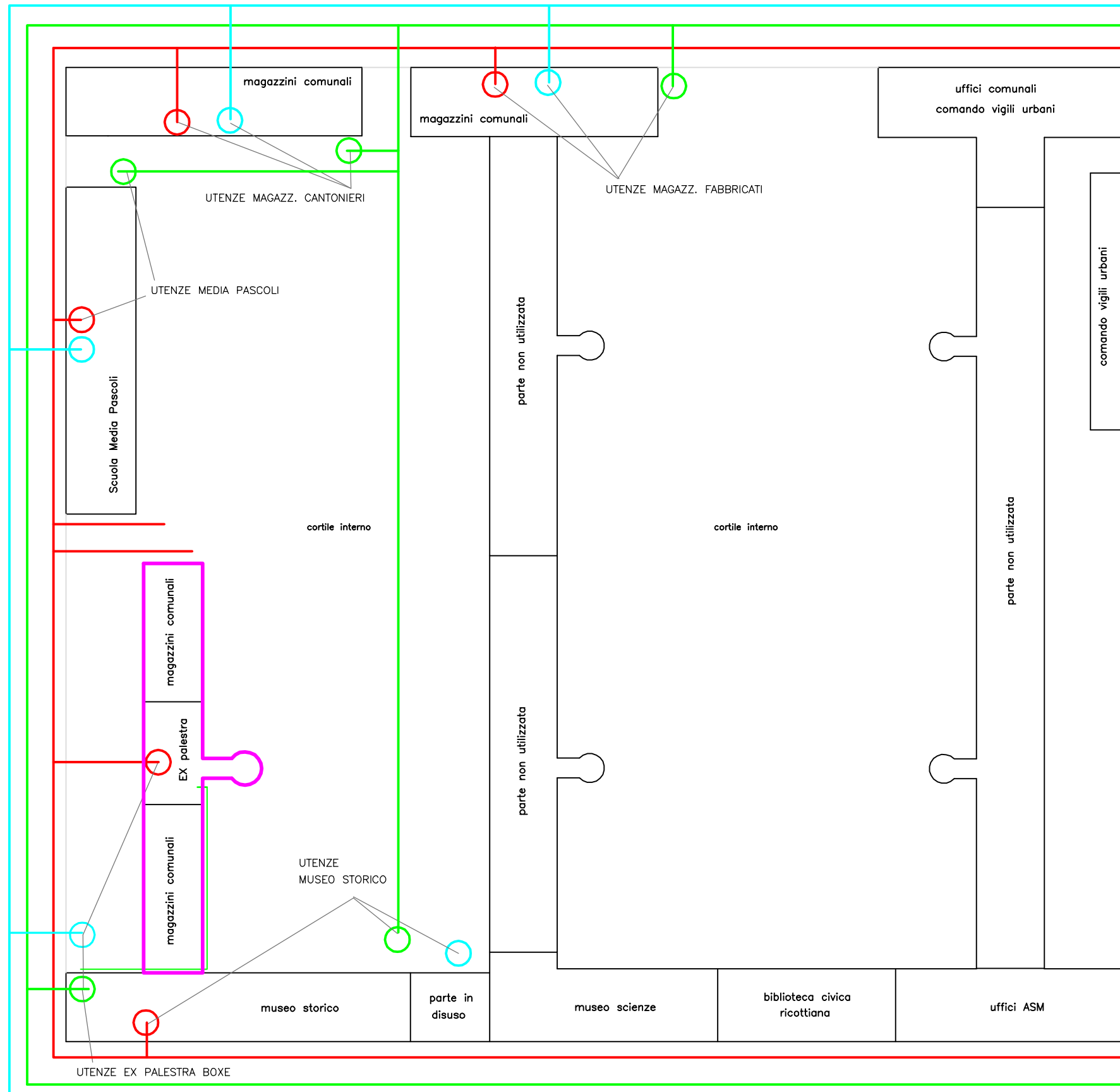
Piante p. Terra e p. 1°

Scala 1:100






EX CASERMA "ZANARDI BONFIGLIO"




via F.lli Kennedy



LEGENDA UTENZE

-  CONTATORE ELETTRICITA'
-  CONTATORE ACQUA
-  CONTATORE GAS

LEGENDA LINEE

-  LINEA ELETTRICITA'
-  LINEA ACQUA
-  LINEA GAS

 EDIFICIO PROPOSTO

via Marsala

Corso F.lli Rosselli



COMUNE DI VOGHERA

RETI SERVIZI PUBBLICI
planimetria generale
scala 1:1000

via Gramsci